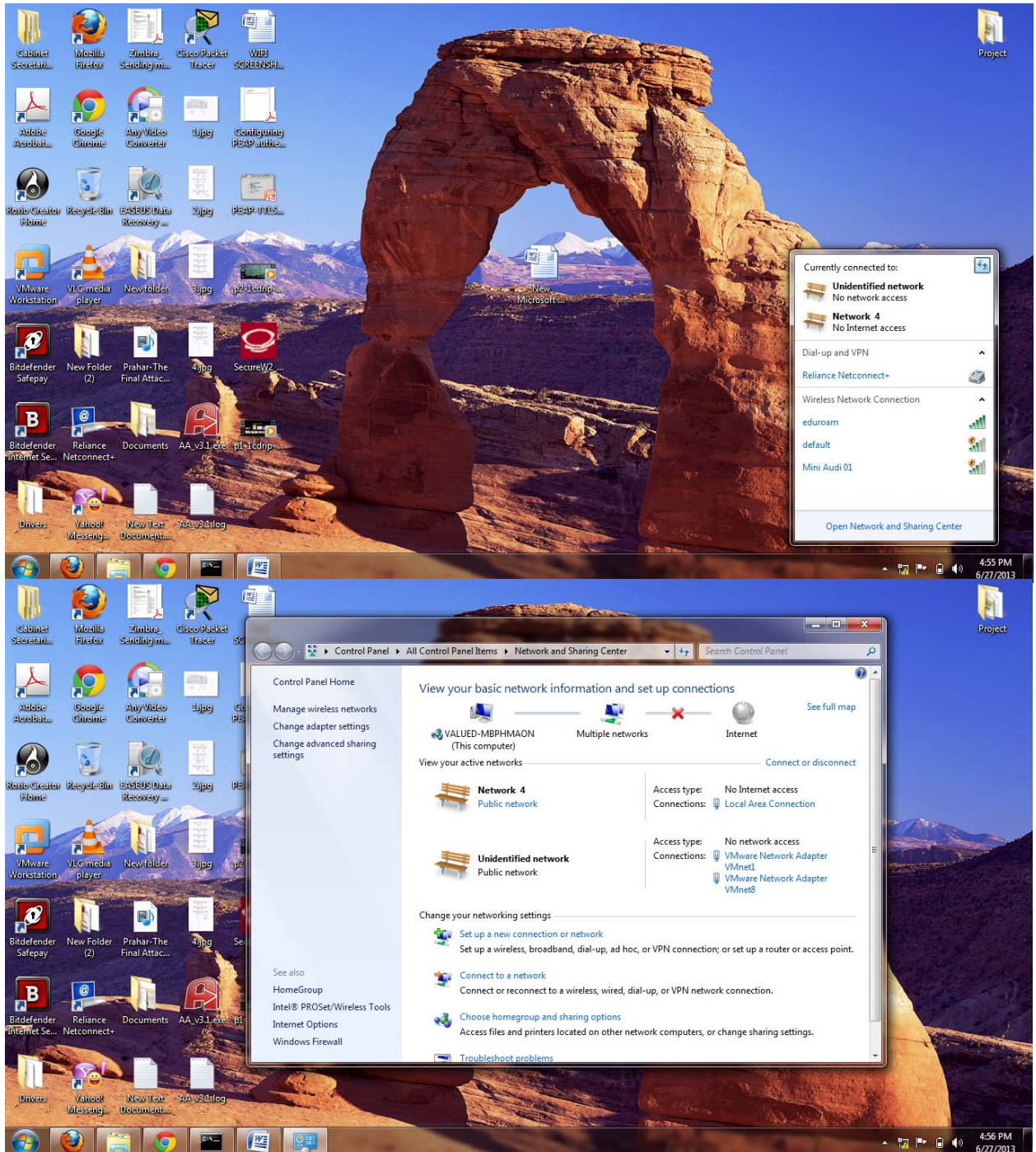
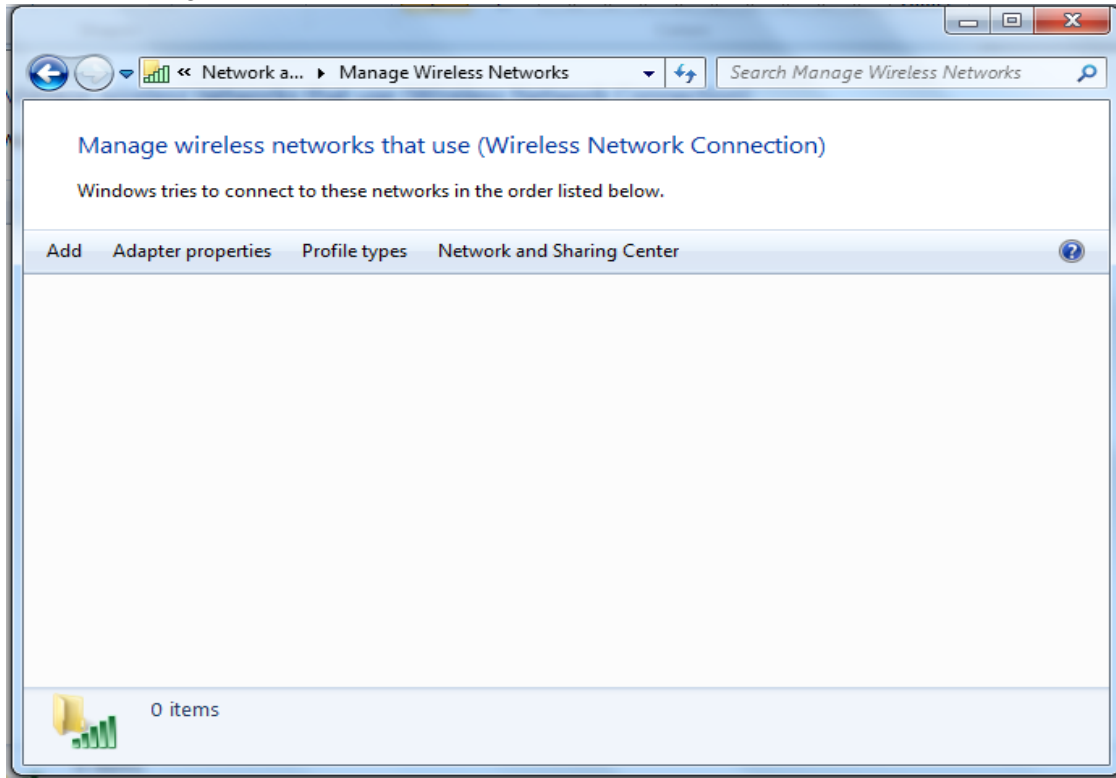


Network Configuration for Eduroam service

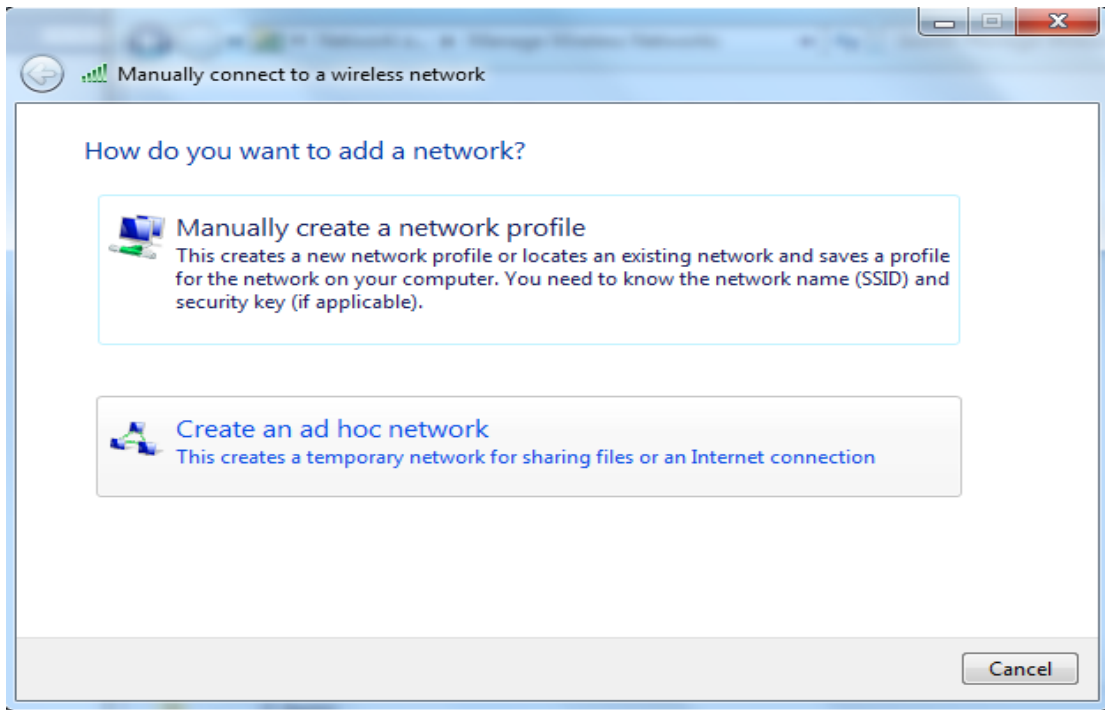
1. Check the ssid of your router for eduroam service in laptop. Now click on the open network and sharing center.



2. Click of “Manage wireless networks”

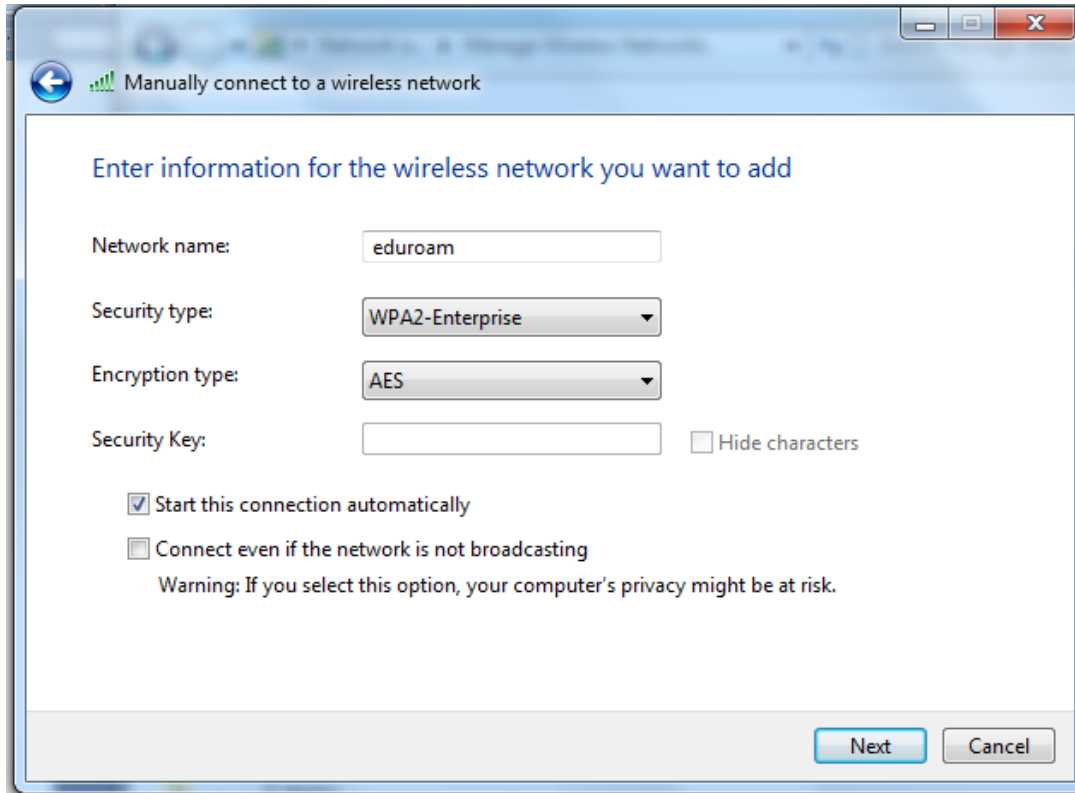


3. Now add a new wireless network. Click on Add button.

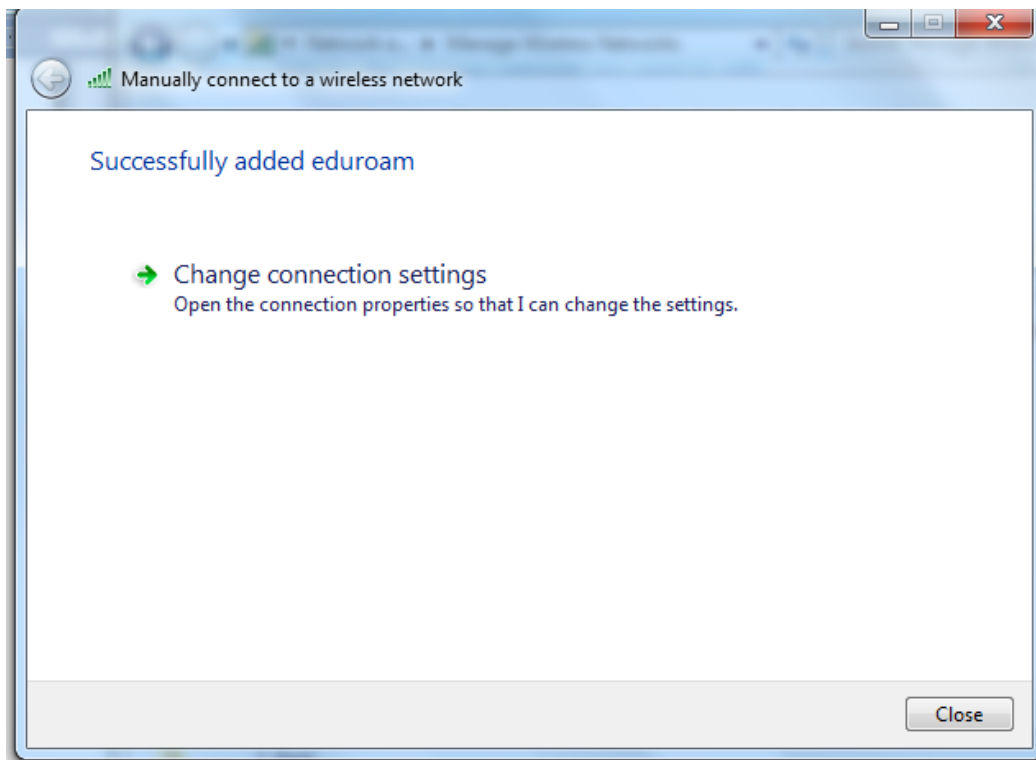


4. Select “Manually create a network profile”

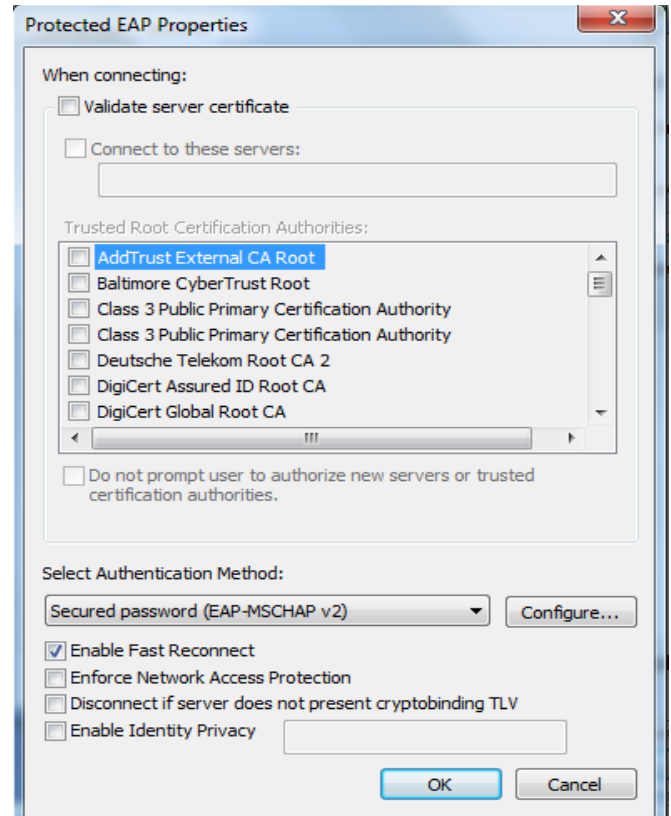
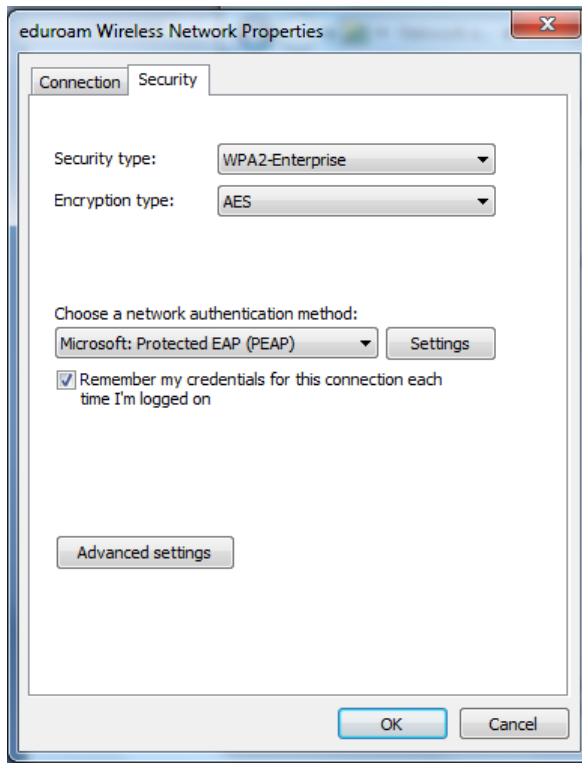
5. Configure the required information as under:
 - a. Network name: eduroam
 - b. Security type: WPA2-Enterprises
 - c. Encryption type: AES



6. Click Next.



7. Select “Change connection settings”

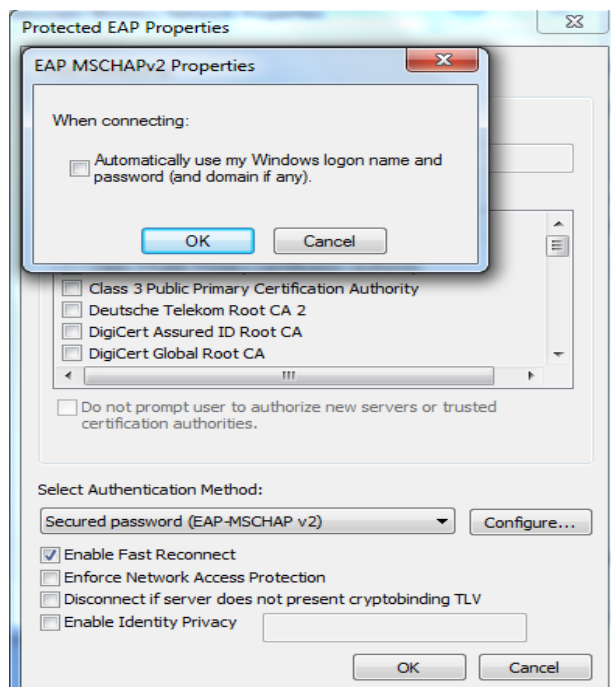


8. Click on Security button.

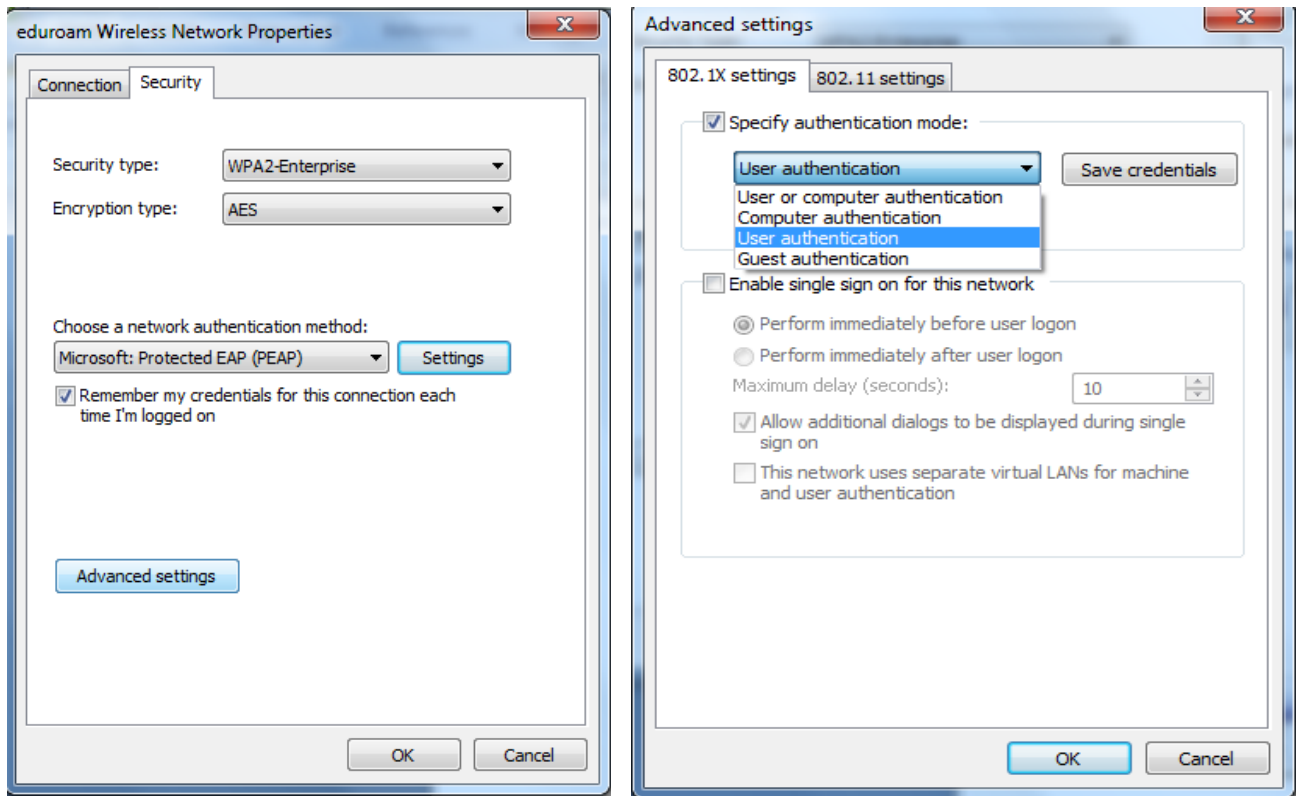
9. Click on Settings button.

10. Uncheck “Validate server certificate”

11. Click on Configure button and uncheck the windows logon option.



12. Click on ok. You will be return to the setting window. Again click on ok.
13. Now you will be return to the security setting window.
14. Now click on Advance setting button.



15. Check "Specify authentication mode" and select user authentication from dropdown menu.
16. Now click on Save credentials button. Enter the username and password provided to you. (For username and password drop a request mail to itsupport@iiti.ac.in)
17. Now after entering the username and password, you will be return to the advance setting window. Click OK to return to security setting window and again click OK to complete the configuration.
18. Now you can connect to the wireless network with SSID eduroam.