

How to Join IIT Indore Active Directory Domain Controller

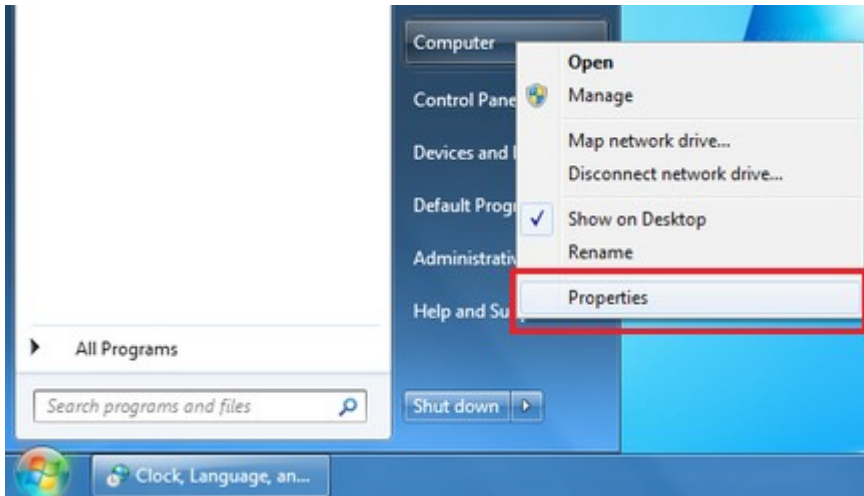
1. Please note that these steps will create a new user in your computer.

2. Please note your present username in your computer.

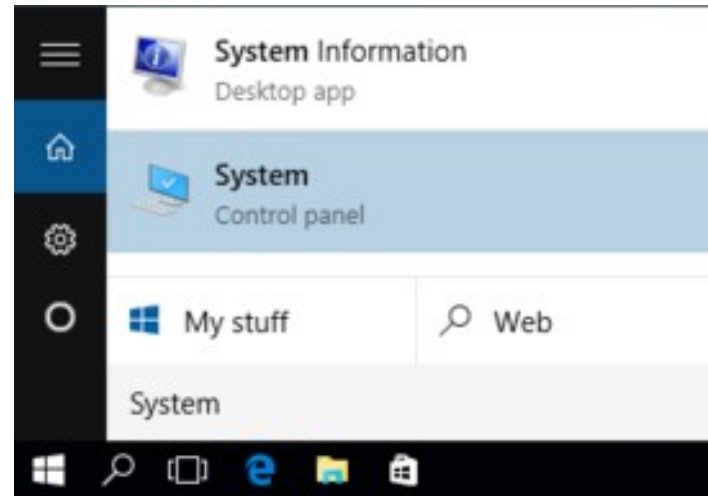
3. You can use both user accounts or shift your data to this new account.

This section is for windows users

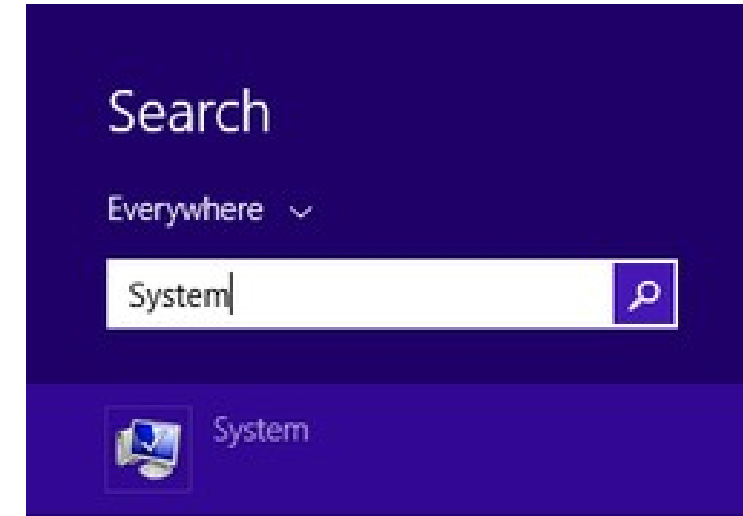
STEP 1:



Windows 7



Windows 8

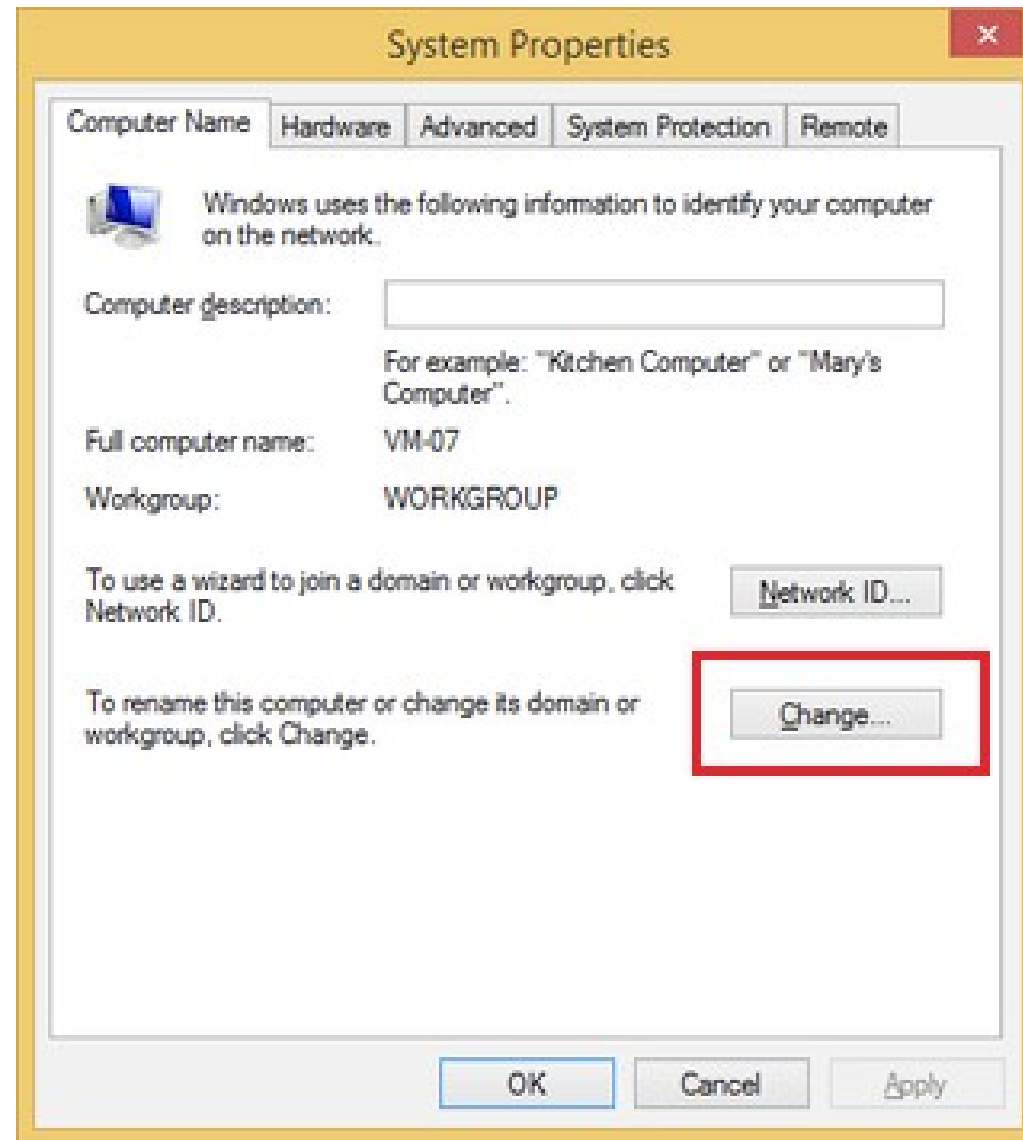


Windows 10

Click on the Change Settings



Click on Change Button



Click on Domain option and provide ad.iiti.ac.in as a value in text box

Computer Name/Domain Changes

You can change the name and the membership of this computer. Changes might affect access to network resources.

Computer name:
VM-07

Full computer name:
VM-07

More...

Member of

Domain:
ad.iiti.ac.in

Workgroup:
WORKGROUP

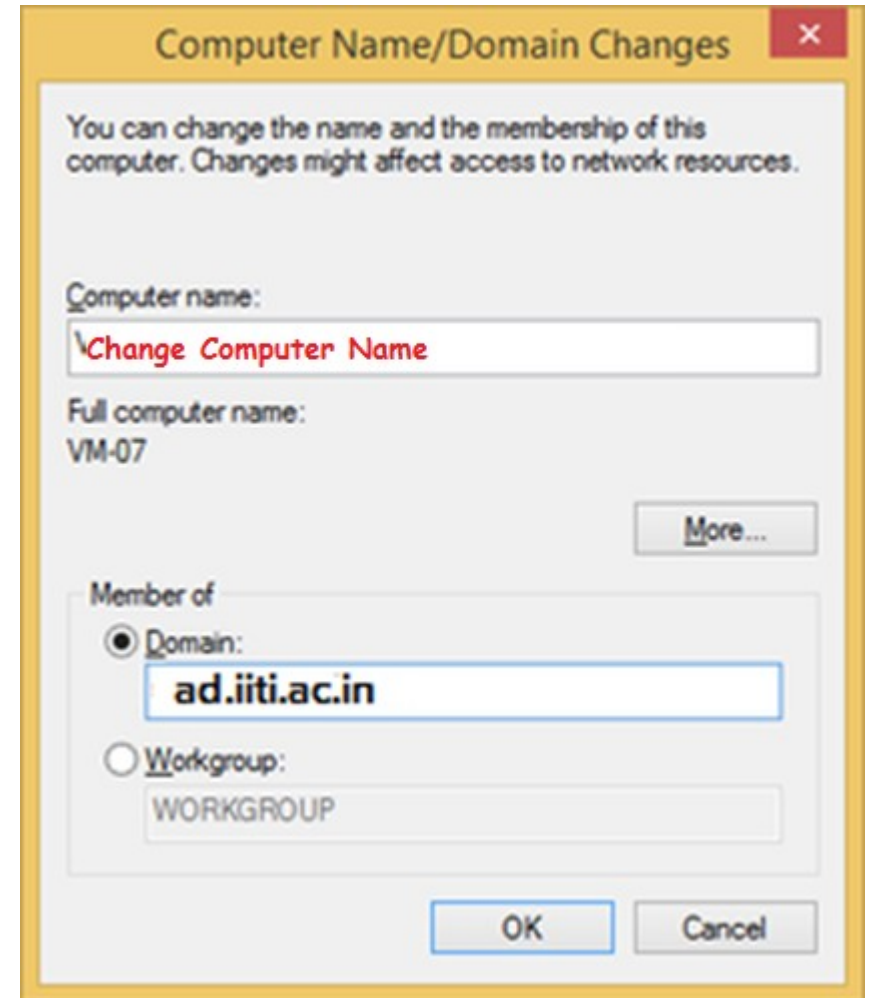
OK Cancel

1. Change your Personal Computer Name to :
“Your-ID-PC”
2. For Example if your Email ID is
jonsnow@iiti.ac.in

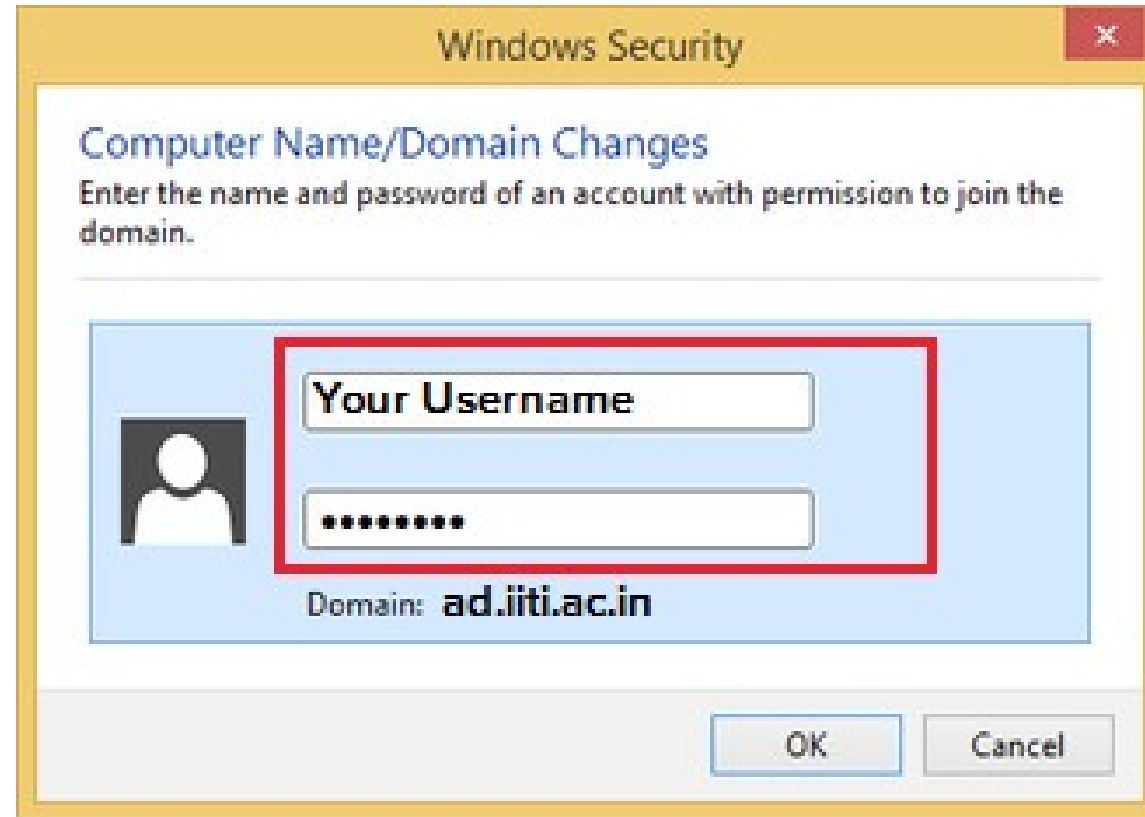
Your computer name will be jonsnow-PC

For more than one computer you can append
1,2,3 etc

For example : jonsnow-1-PC, jonsnow-2-PC
etc.



Provide your credentials of active directory directory mailed to you



Windows Security

Computer Name/Domain Changes

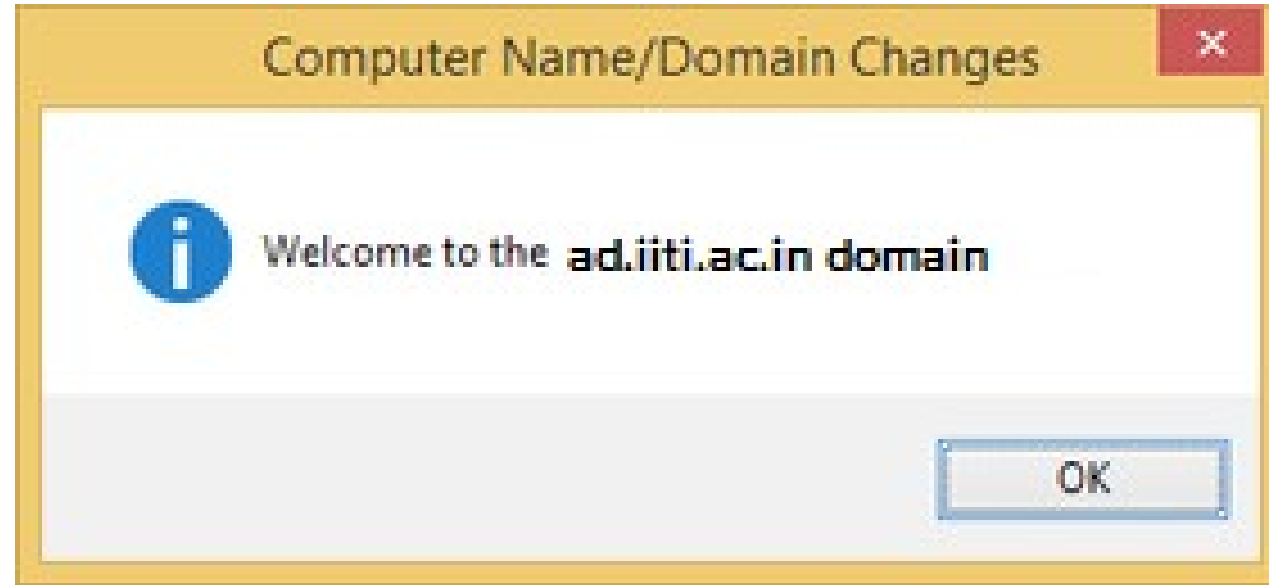
Enter the name and password of an account with permission to join the domain.

Domain: **ad.iiti.ac.in**

OK Cancel

The image shows a Windows Security dialog box titled "Windows Security" with a close button in the top right corner. The main heading is "Computer Name/Domain Changes" in blue. Below it, the text reads "Enter the name and password of an account with permission to join the domain." There is a light blue rectangular area containing a user icon on the left and two input fields on the right. The top input field is labeled "Your Username" and the bottom one is a password field with ten asterisks. A red rectangular box highlights both input fields. Below the input fields, the text "Domain: ad.iiti.ac.in" is displayed. At the bottom of the dialog, there are two buttons: "OK" and "Cancel".

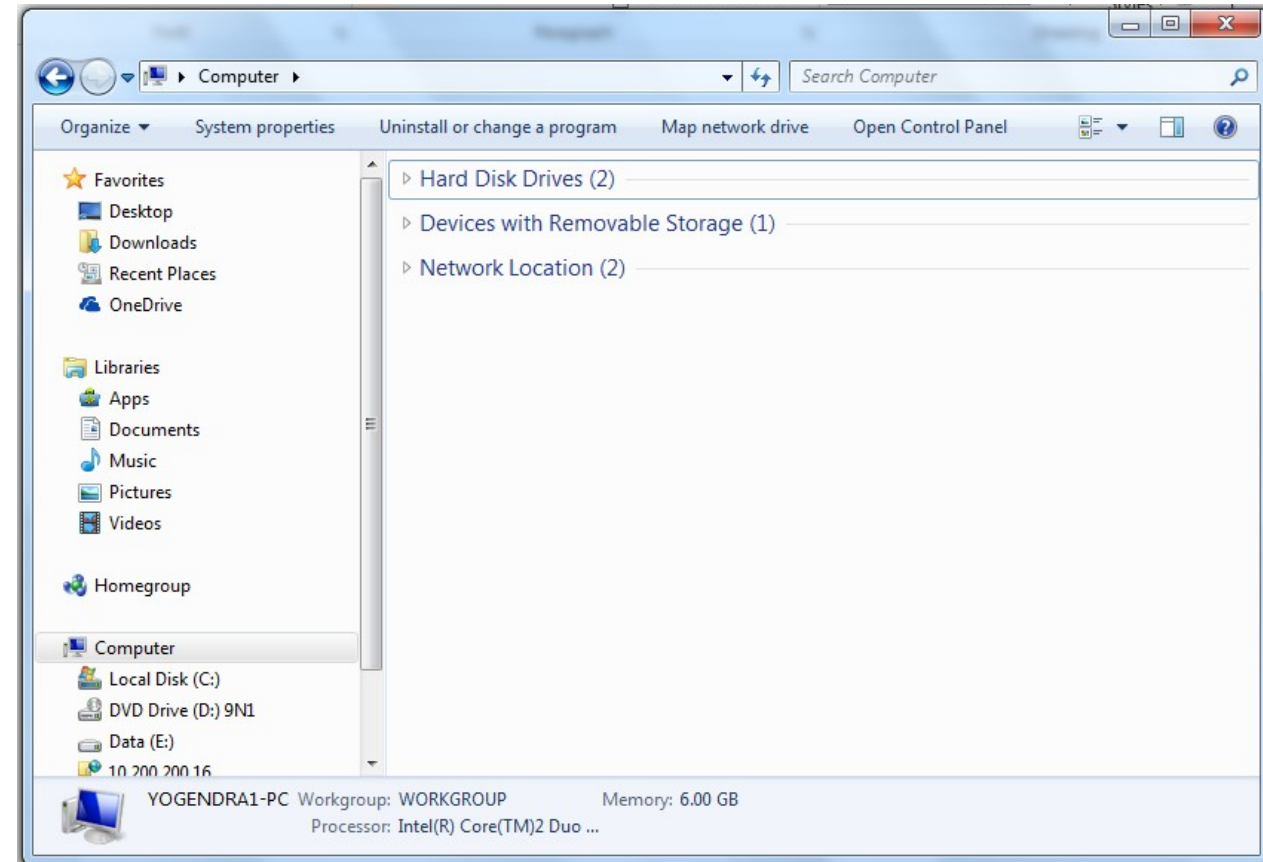
A welcome message will appear
after successful login



- After adding the computer into Active directory domain it will ask you to reboot the machine.
- Please save your work and reboot the machine.
- At the login window now please type you new active directory username (e.g. jonsnow@iiti.ac.in) and password for logging.
- You can also use your old (Admin) computer username and password as well by : `.\YOUR_OLD_USERNAME` and your password of that account. *(please note a “dot slash” is required before username)*
- For any installation of software and admin task in your computer you can specify: `.\YOUR_OLD_USERNAME` and the password.

After adding your computer to Active directory domain

1. Open my Computer or File explorer.
2. Type `\\equitrac` on the top of address bar.
3. It will show you the printers available in the campus, double click on the relevant printer to install.
4. **When you start installing printers it will ask for user name and password. Please provide administrator user name of your machine as described in the slide no. 10 step 3.**



Macintosh/ Linux Users have to
contact at Server room WS-105 at
Workshop building for Active
directory settings